



THE **MOTOR** LINE  
THAT **STANDS UP**  
TO **WASHDOWN.**



**WASHGUARD<sup>®</sup>**  
**INDUSTRIAL-DUTY**  
**ELECTRIC MOTORS**



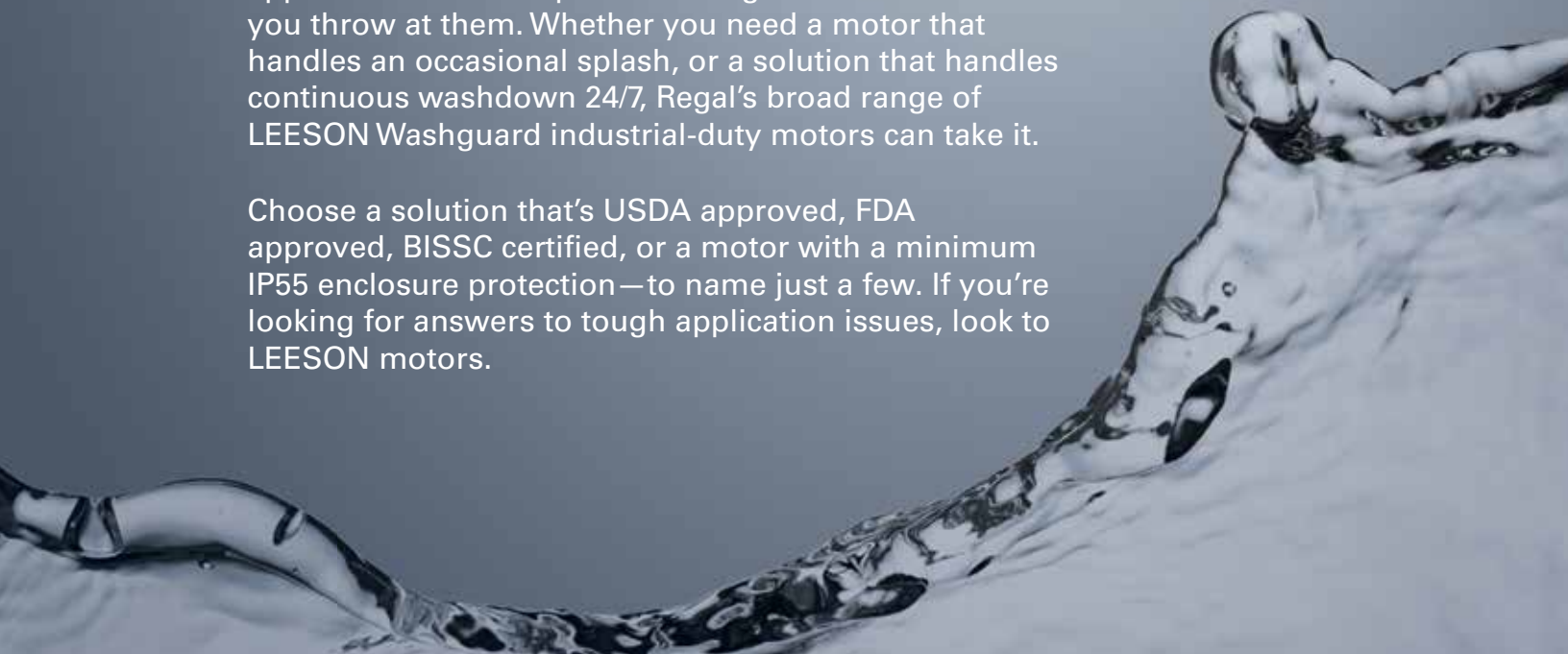
# NOTHING SHEDS WATER LIKE A DUCK.

## LEESON® WASHGUARD® INDUSTRIAL-DUTY MOTORS.



LEESON® Washguard® motors deliver something most motors can't—the confidence to know your applications will be up and running no matter what you throw at them. Whether you need a motor that handles an occasional splash, or a solution that handles continuous washdown 24/7, Regal's broad range of LEESON Washguard industrial-duty motors can take it.

Choose a solution that's USDA approved, FDA approved, BISSC certified, or a motor with a minimum IP55 enclosure protection—to name just a few. If you're looking for answers to tough application issues, look to LEESON motors.



# THE MOTORS THAT STAND UP TO WASHDOWN.

## LEESON® WASHGUARD® MOTORS FEATURES AT A GLANCE



FEATURE	WHITE DUCK	WASHGUARD II	SST DUCK	STAINLESS DUCK	EXTREME DUCK® ULTRA
<b>SEALING ADVANTAGES</b>					
Complete motor encapsulation					■
Interior corrosion protection	■	■	■	■	■
Motor breather plugs/drain plugs	■	■	■	■	Not needed for total encapsulation
Shaft seals on both ends of TEFC motors	■	■	■	■	■
Two-piece shaft seal					■
Viton®* seals between endbells and frame				■	■
O-ring sealed openings				■	■
Potted lead entrance					■
<b>INSTALLATION AND MAINTENANCE</b>					
Color-coded leads					■
Non-wicking lead wires					■
Sealed bearings	■	■	■	■	■
Internally locked shaft-end bearing	■	■	■	■	■
Screw-on conduit box cover				■ ①	■
360° rotatable conduit box					■
Q-Car™ rotor cartridge change-out				■	■
<b>CERTIFICATIONS</b>					
Nameplate permanently etched in frame			■	■	■
60Hz and 50Hz data on nameplate	■	■	■	■	■
CE mark on nameplate	■	■	■	■	■
Standard motors built with Inverter Rated Insulation System and marked on nameplate (1 HP and higher)	■	■	■	■	■
IP Ratings	IP55	IP55	IP55	IP56	IP69k
UL, CSA listed	■	■	■	■	■
BISCC approved		■			■
<b>SPECIAL CONSIDERATIONS</b>					
Pump motor designs	■			■	
Brakemotor designs	■			■	
DC motors available	■			■	
Metric designs available				■	■
3-year warranty	■ ②	■ ②	■ ②	■ ②	■
Local inventory support	■	■	■	■	■

① 56/143/145T Frame Ratings    ② Premium Efficient Motors

# WHITE DUCK MOTORS

HIGH-GLOSS EPOXY.  
FDA-APPROVED.



Suited for an occasional washdown, White Duck motor is the LEESON® Washguard® motor series that started it all. Choose AC and DC ratings, 1/3–15 HP.

#### Ratings:

- IP55 enclosure protection
- USDA-approved white epoxy finish

The White Duck motor series is geared for applications exposed to an occasional washdown. Coated in a high-gloss, high-durability, FDA-approved white epoxy finish, White Duck Washguard® Motors find a perfect fit in conveying, bottling, food packaging, pumping and fan applications—wherever batch or process requirements demand reliable performance.

#### BENEFITS:

- Durable white epoxy finish for superior protection
- Stainless steel shaft, hardware, conduit box, cover and nameplate
- Buna-N gaskets and Viton® shaft seals on both ends of TEFC designs
- Drains for all mounting orientations enable flexible installation
- NEMA Premium®—1 HP and higher - 3 Phase
- Moisture-resistant interior coating inhibits corrosion
- IRIS® Inverter Rated Insulation System—1 HP and higher
- Single-Phase motors feature an electronic solid-state switch for worry-free starting in high-moisture installations







### JET PUMP & JM PUMP MOTORS

- 3/4–3 HP designs
- 1–15 HP JM Pump designs
- C face, with and without base
- EPACT and Premium efficient



### BRAKEMOTOR

- 1/2–2 HP designs
- 208–230/460, 3-Phase
- Stearns® brakes
- Optional washdown brake kits



### NEMA® THREE-PHASE MOTORS

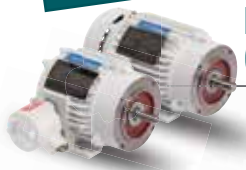
- 1/4–15 HP designs
- 230/460 and 575 volts
- Rigid base and C face designs
- EPACT and Premium efficient inverter rated



### WASHGUARD® COUPLER BRAKES - WHITE EPOXY

- Single Phase 115/230 volt coils
- Three Phase 208-230/460 and 575 volt coils

**NEW!**



### EXPLOSION PROOF WASHGUARD THREE-PHASE MOTORS

- 1/2 - 2 HP designs
- 230/460 volts
- C face with base
- Premium efficiency
- Thermostats
- Division 1, Division II, Class 1, Groups C & D
- Class II, Groups F & G - with Conduit Box



### WASHGUARD® BRAKEKITS

- Three Phase 208-230/460 volts
- Single Phase 230 volts
- 1 HP, 3 Ft-lbs
- 2 HP, 6 Ft-lbs
- 3 HP, 10 Ft-lbs



### NEMA SINGLE-PHASE MOTORS

- 1/3–2 HP designs
- C-Face, with and without base
- Solid-state starting switch



### DC GEARMOTORS

- P300, PE350 and Right-angle series
- 90 and 12 volt designs
- Stainless steel exterior hardware
- Precision-machined gears



### NEMA DC MOTOR

- 1–1-1/2 HP designs
- 90 and 180 volts
- Removable base
- IEC B5 flange ratings available
- 1/8–1/4 HP 12V designs



### AC GEARMOTORS

- P240 and Right-angle series
- 115/230, 1-Phase designs
- 230, 3-Phase designs
- 304 Series stainless output shafts
- Needle bearings for high-output torque

# WASHGUARD® II SUPER DUCK® MOTOR

**PAINT-FREE FINISH.  
A FOOD-PROCESSING FAVORITE.**



The Super Duck Motor Series is an ideal solution for conveying applications in bakeries and food-processing plants with its paint-free finish. AC ratings from 1/2–2 HP.

#### **Ratings:**

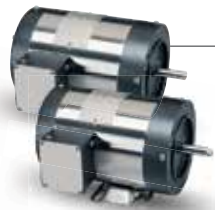
- IP55 enclosure protection
- BISSC certified for the baking industry, authorization no.769

Tested and approved to handle 2,500 hours of diluted salt spray, the Super Duck® Washguard® II Motor Series—with its paint-free design—is well suited for the demanding environments of bakeries and food processing facilities, as well as conveying.

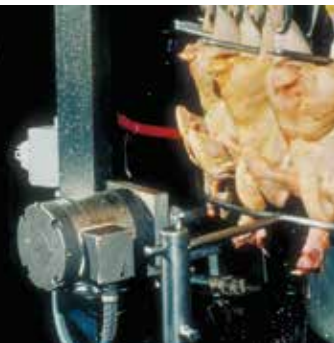
#### **BENEFITS:**

- Paint-free exterior
- Moisture-resistant interior coating inhibits corrosion
- IRIS® insulation system—1 HP and higher
- Stainless steel shaft, hardware, conduit box, cover, nameplate and fan guard
- Specially-processed endshields and conduit box housing
- Buna-N gaskets and Viton® shaft seals
- Drains for all mounting orientations enable flexible installation

#### **THREE-PHASE MOTOR DESIGNS**



- Three-Phase C face motors with base, 1/2–2 HP
- Three-Phase C face motors less base, 1/2–2 HP
- TENV designs
- Inverter rated



# SST DUCK

PAINT-FREE FOR  
ULTRA-CLEAN APPLICATIONS.



When a paint-free motor is needed for ultra-clean operations in the food processing, bottling and pharmaceutical industries, count on LEESON® SST Duck motors to meet the need—at a price that defines value.

## BENEFITS:

- All stainless steel exterior
- Moisture-resistant interior coating inhibits corrosion
- IRIS® insulation system—1 HP and higher
- Full-face nameplate is laser etched in the motor frame
- Buna-N gaskets and Viton® shaft seals on both ends of TEFC motors
- Drains for all mounting orientations enable flexible installation

The SST Duck Motor Series is our value line of stainless steel motors that is appropriate for use in food processing, pharmaceutical, conveying and bottling applications. 1/3–3 HP, 1- and 3-Phase designs.

## Ratings:

- IP55 enclosure protection
- Inverter rated 10:1 constant torque



## SINGLE-PHASE MOTOR DESIGNS

- 1/2–2 HP, 1-Phase C face with base
- 1/2–2 HP, 1-Phase C face less base
- High starting torque

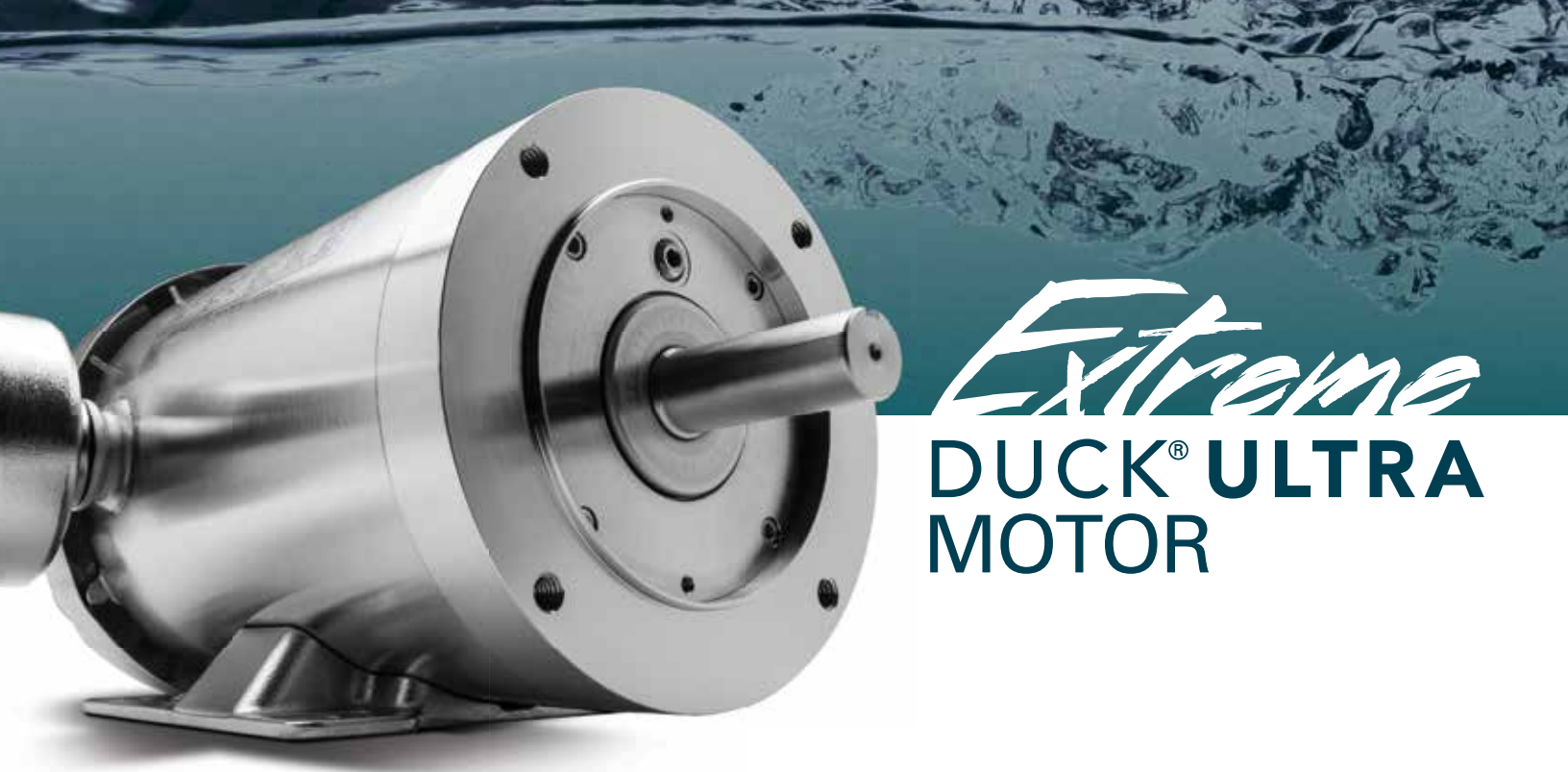


## THREE-PHASE MOTOR DESIGNS

- 1/3–30 HP, 3-Phase C face with base
- 1/3–3 HP, 3-Phase C face less base
- Inverter rated
- 10:1 constant torque







*Extreme*  
**DUCK® ULTRA  
MOTOR**

## HIT IT WITH YOUR BEST SHOT.

There's a new, higher bar to cross in the washdown motor category, and LEESON motors just raised it—again. Building on the success of the industry-leading Extreme Duck® motor series, we took it a giant leap forward with sealing enhancements you just won't find everywhere. We're talking major improvements to the shaft seal technology to handle installation in any orientation, a welded conduit connection to the stainless steel body, and an exclusive vacuum epoxy encapsulation system that ensures whatever is trying to get into the windings is effectively kept out. With an IP69K certification, water, oil, cutting fluids can't get in - go ahead, give it your best shot.





# THERE'S NO MOTOR SEALED LIKE THE EXTREME DUCK® ULTRA.



## SPECIFICATIONS

### PERFORMANCE

- 1/3–3 HP, 3-Phase, C face with base
- 1/3–3 HP, 3-Phase, C face less base
- 2-, 4- and 6-pole
- TENV
- NEMA Premium® efficiency design
- IRIS® Inverter-Rated Insulation System
- 10:1 constant torque
- Full-face nameplate, laser etched in the motor frame
- Q-Car rotor cartridge design for quick access to the interior
- Low-stress winding design

### SEALING

- Shaft grounding rings on 1/2–3 HP, 4-pole, Rigid C face
- Enhanced encapsulation process
- Non-wicking lead wires
- Two-piece shaft seal with flinger

### INSTALLATION

- Color-coded motor leads
- Chemical and abrasion-resistant lead markers
- Welded pipe nipple at ingress on TEFC models
- Conduit box rotates 360 degrees on TEFC models

- **IP69 Certified IEC60529**
- **IP69K tested per DIN 40050-9**

## The finest product design should never get in the way of your ability to install it.

That's true whether it's an OEM installation in a controlled environment, a retrofit on the production line floor, or in-line maintenance when every lost minute counts. So we watched how you install, noted where time adds up, and asked how we could help improve it. The result? Smart design features such as color-coded leads, a conduit box that rotates to enable convenient wire entry, and exclusive Q-Car rotor cartridge design for interior access without removing the motor from the installation.

300 Series stainless steel components include the frame, base, conduit box cover, endshields and bearing carrier cover. It's the perfect motor design for extreme washdown conditions.

### Ratings:

- IP69K enclosure protection
- IRIS® Inverter-Rated Insulation System
- NEMA Premium®



# PREMIUM STAINLESS DUCK MOTOR

DURABILITY IN FREQUENT WASHDOWN APPLICATIONS.



Our Premium Stainless Duck motor line meets IEEE-841 severe duty requirements and passes IP56 test requirements. These motors are proven performers in frequent washdown applications. AC and DC ratings available.

#### Ratings:

- IP55 enclosure protection
- 300 series stainless steel
- 3-year warranty—Premium efficiency

Look to the Premium Stainless Duck Motor Series for proven durability in frequent washdown applications that you may find in food processing, pharmaceutical, dairy, chemical-processing and beverage and bottling industries.

#### BENEFITS:

- All exterior components are 300-series stainless steel
- Full-face nameplate is laser etched in the motor frame
- Endshields are O-ring sealed to motor frame
- Double lipped Viton® shaft seals
- Interior components are coated to protect against corrosion
- Hydrophobic breather plugs are used on AC designs
- IRIS® Inverter Rated Insulation System—AC designs
- IP56 enclosure protection
- 3-year warranty—Premium efficient models

#### GENERAL PURPOSE PREMIUM STAINLESS MOTORS



- Three-Phase, C face with base, 1/2–10 HP
- Three-Phase, C face less base, 1/2–5 HP
- Single-Phase, C face with base, 1/3–2 HP
- Single-Phase, C face less base, 1/3–2 HP

#### IEC STAINLESS MOTORS



- B5 Flange: Round Body, 0.25KW (1/3 HP)–1.5KW (2 HP) 71 Frame, 80 Frame and 90 Frame
- B5 Flange: Rigid Base, 0.25KW (1/3 HP)–0.55KW (3/4 HP), 80 Frame
- B14 Flange: Round Body, 0.25KW (1/3 HP)–0.55KW (3/4 HP), 71 Frame and 80 Frame
- B14 Flange: Round Body, 0.25KW (1/3 HP)–0.55KW (3/4 HP), 80 Frame

#### STAINLESS BRAKE MOTOR



- Three-Phase, TENV, C face with base, 1/2–2 HP
- Stearns® stainless steel brakes, 3- and 6-ft lb. rated

#### STAINLESS JP PUMP MOTORS



- Three-Phase, TEFC, 1–10 HP
- 1800 and 3600 RPMs
- EPACT efficient



# ALL STAINLESS DC MOTORS & AC MILK PUMP MOTORS

GEARED FOR  
FLEXIBLE INSTALLATION.



The stainless steel, Washguard®, DC motors meet IP-55 test requirements. These SCR rated DC motors have proven to hold up when used in frequent washdown applications. The conduit box is located at the 12:00 position, making electrical connections accessible in various mounting positions. Maximize your application requirements by using one of our washdown duty DC motor controls that are matched to optimize performance with these stainless steel DC motors.

## BENEFITS:

- All exterior components are 300-series stainless steel
- Full fact nameplates are laser etched in motor frame
- Endshields are O-ring sealed to motor frame
- Double lipped Viton® shaft seals
- Constant torque throughout speed range
- Oversized brushes for long brush life

## MILK TRANSFER PUMP MOTORS

- Epoxy painted and stainless ratings available
- Single and three phase
- 3600 RPM
- TENV
- Inverter rated on 3 phase designs
- Solid state encapsulated starting switch on capacitor start motors
- Replacements for WESTPHALIASURGE® milk pumps



## C-FACE MOTOR WITH BASE AND C FACE MOTOR LESS BASE

- 1/4 HP to 1 HP
- 90 Volt and 180 Volt

## MILK PUMP MOTORS - THREADED SHAFT

- Epoxy painted and stainless ratings available
- Single and three phase
- 3600 RPM
- TEFC and TENV
- C Face with base
- Inverter rated on 3 phase designs
- Solid state encapsulated starting switch on capacitor start motors
- Replacements for BouMatic® milk pumps

## MILK TANK WASHER MOTORS

- Epoxy paint
- 303 grade stainless steel shaft
- CCW rotation facing lead end
- Single phase
- TEFC
- 3600 RPM
- C face with base

Our Washguard DC stainless steel motors hold up in frequent washdown applications.

### Ratings:

- IP55 enclosure protection
- NEMA® & IEC
- Washguard® 3-year warranty



NEMA is a trade mark of National Electrical Manufacturers Association. All rights reserved.

BouMatic is believed to be the trademark or trade name of Technologies Holdings Corp. and is not owned or controlled by Regal Beloit Corporation.

Viton is believed to be the trademark or trade name of The Chemours Company FC and is not owned or controlled by Regal Beloit Corporation.

Westphaliasurge is believed to be the trademark or trade name of GEA Farm Technologies, Inc. and is not owned or controlled by Regal Beloit Corporation.



# AC INVERTERS & DC CONTROLS

PERFORMANCE MATCHED SOLUTIONS.



These AC and DC controls are matched to our Washguard® motors for optimal performance.

#### Ratings:

- IP65 on stainless steel and vector series
- IP65/IP54 on epoxy coated
- White epoxy and stainless steel finishes

We have AC and DC controls that are performance matched to our Washguard® 3-Phase AC and DC motors. Our AC inverter offering includes white epoxy, stainless steel or plastic enclosures that meet IP65/IP54 enclosure protection. We offer both our Micro Series line and our Vector duty series line having washdown duty protection. Our DC washdown duty controls are SCR rated for either permanent magnet or shunt wound DC motors. We also offer a washdown duty regenerative SCR control that is designed for high cycling and forward and reverse applications.

#### BENEFITS:

##### Washguard AC Control Benefits:

- Stainless steel, epoxy painted or plastic enclosure protection
- Micro series controls have an intuitive alphanumeric display
- Vector Series have a 6-button display interface
- Multiple pre-set speed function
- Forward and reverse
- Programmable acceleration and deceleration times
- Password protected
- Serial communication port for interface
- Designs for both 1-Phase and 3-Phase input—3-Phase output

##### Washguard DC Control Benefits:

- SCR type controls
- NEMA® 4X enclosure protection
- Reversing and non-reversing designs
- Regenerative—four quadrant designs

#### WHITE EPOXY WASHGUARD AC CONTROLS



- 1/2 HP to 125 HP
- 200–240 / 400–480 and 480–590 input voltage

#### STAINLESS STEEL WASHGUARD AC CONTROLS



- 1/2 HP to 125 HP
- 200–240 / 400–480 and 480–590 input voltage

#### VECTOR SERIES WASHGUARD AC CONTROLS



- Plastic enclosure
- 1/2 HP to 30 HP
- 200–240 / 400–480 and 480–590 voltage

#### WASHGUARD DC CONTROLS



- 1/8 HP to 3 HP
- 10 amp and 15 amp output
- Single-Phase—115V and 230V input
- DC—90V and 180V output







## CHEMICAL RESISTANCE COMPARISON

CHEMICAL NAME	% CONCENTRATION	EXPOSURE	WHITE EPOXY	STAINLESS STEEL
Fresh Water	100	Continuous	Excellent	Excellent
Salt Water	5	Continuous	Excellent	Excellent
Salt Brine	Dilute	Continuous	Fair	Good
Ammonium Hydroxide	Dilute	Continuous	Good	Excellent
Calcium Hydroxide (Lime)	100	Intermittent	Good	Excellent
Citric Acid	10	Continuous	Good	Excellent
Ethylene Glycol	100	Continuous	Excellent	Excellent
Hydrochloric Acid	37	Intermittent	Good	Poor
Lactic Acid	Dilute	Intermittent	Excellent	Excellent
Lactic Acid	100	Intermittent	Fair	Fair
Mineral Spirits	100	Continuous	Excellent	Excellent
Potassium Hydroxide	50	Intermittent	Fair	Fair
Sodium Hydroxide	5	Continuous	Fair	Excellent
Sodium Hydroxide	20	Continuous	Fair	Excellent
Sodium Hydroxide	50	Continuous	Excellent	Excellent
Sodium Hypochlorite (Bleach)	15	Intermittent	Excellent	Excellent
Sulfuric Acid	10	Intermittent	Fair	Fair
Toluene	100	Continuous	Fair	Fair
Animal Fats	NA	Continuous	Excellent	Excellent
Mineral Oils	NA	Continuous	Excellent	Excellent
Vegetable Oils	NA	Continuous	Excellent	Excellent
Cutting Oils	NA	Continuous	Excellent	Excellent
Detergents	NA	Continuous	Excellent	Excellent
Gasoline	NA	Continuous	Fair	Fair
Hydraulic Fluid	NA	Continuous	Excellent	Excellent
Lubricating Oils	NA	Continuous	Excellent	Excellent
General Weathering	NA	Continuous	Fair	Excellent
Mold/Mildew	NA	Continuous	Excellent	Excellent
Light Abrasion	NA	Continuous	Excellent	Excellent
Heavy Abrasion	NA	Continuous	Fair	Excellent

## District Sales Offices and Warehouses

Regal District Sales Offices & Warehouses can provide complete information including price and availability on both standard stock and special motors.

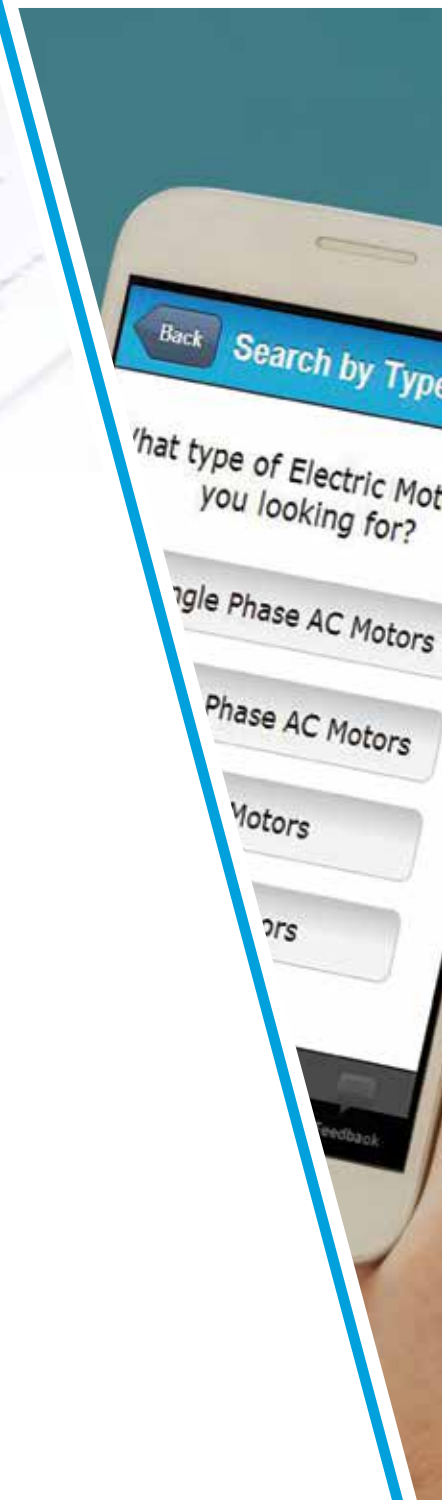
### United States

- **CALIFORNIA, Los Angeles**  
Bob Schwing  
323/278-7979  
Fax: 323/728-7955
- **CALIFORNIA, San Francisco**  
District Mgr.,  
Dave Richardson  
925/371-8125  
Fax: 925/371-5673
- **COLORADO, Denver**  
District Mgr.,  
Kevin Springstead  
800/444-7609  
Fax: 972/245-2328
- **NEW ENGLAND, Metro Boston, MA**  
District Mgr.,  
Dave Manning  
888/479-7875  
Fax: 508/987-1173
- **FLORIDA, Tampa**  
District Mgr.,  
Bill Taylor  
813/740-2571  
Fax: 813/663-9104
- **GEORGIA, Atlanta**  
District Mgr.,  
Walter Brooks  
770/933-0453  
Fax: 770/933-0549
- **ILLINOIS, Chicago**  
Co-District Managers  
Mike Miller,  
Robert Sheppard  
630/458-9511  
Fax: 630/458-1923
- **INDIANA, Indianapolis**  
District Mgr.,  
Matt Simko  
800/331-2911  
Fax: 440/975-3575
- **IOWA, Des Moines**  
District Mgr.,  
John Marshalla  
952/935-8271  
Fax: 952/935-8399
- **KANSAS, Kansas City**  
District Mgr.,  
Pat Donnelly  
913/599-6983  
Fax: 913/599-6987
- **MICHIGAN, Grand Rapids**  
District Mgr.,  
Greg Norris  
616/249-8430  
Fax: 616/249-8628
- **MINNESOTA, Minneapolis**  
District Mgr.,  
John Marshalla  
952/935-8273  
Fax: 952/935-8399
- **MISSOURI, St. Louis**  
Co-District Managers  
Pat and Ken Anvender  
314/714-1460  
Fax: 314/714-1461
- **NEW JERSEY/METRO NEW YORK/LONG ISLAND**  
(Plainfield, NJ 18229)  
Dan Brisbane  
570/325-3684  
Fax: 570/325-3870
- **NEW YORK, Syracuse**  
District Mgr.,  
Chris Brisbane  
866/505-8796  
Fax: 570/325-3870
- **NORTH CAROLINA, Charlotte**  
District Mgr.,  
Doug Landgraf  
803/396-8200  
Fax: 803/396-8208
- **OHIO, Cincinnati**  
District Mgr.,  
Ken Simko  
513/755-1000  
Fax: 513/755-1081
- **OHIO, Cleveland**  
District Mgr., Matt Simko  
440/951-5117  
Fax: 440/975-3575  
800/331-2911 (W.PA, WV)
- **PENNSYLVANIA, Jim Thorpe**  
District Mgr.,  
Craig Brisbane  
570/325-3684  
Fax: 570/325-3870
- **TEXAS, Dallas**  
District Mgr.,  
Kevin Springstead  
800/444-7609  
Fax: 972/245-2328
- **TEXAS, Houston**  
District Mgr.,  
Kevin Springstead  
800/444-7609  
Fax: 972/245-2328
- **UTAH, Salt Lake City**  
District Mgr.,  
Kevin Springstead  
800/444-7609  
Fax: 972/245-2328
- **WASHINGTON, Seattle**  
District Mgr.,  
Amorette Gent  
206/767-2780  
Fax: 206/767-2851
- **WISCONSIN, Milwaukee**  
District Mgr.,  
John Hegel  
414/475-9222  
Fax: 414/475-9267

### International

- International Sales Administrator,  
Lori Volkert  
WISCONSIN, Grafton  
(+1) 262/377-8810  
Fax: (+1) 262/377-3440
- **ASIA**  
Mr. Say Jou Yap  
Singapore  
(+65) 6863-3473  
Fax: (+65) 6863-3476  
salessg@regalbeloit.com
- **CENTRAL AMERICA, MEXICO, SOUTH AMERICA & CARIBBEAN FLORIDA, Miami**  
Mr. Paulo Martin  
(+1) 813/621-3030  
Fax: (+1) 813/252-3910  
sales@cidela.com
- **EUROPE**  
Mr. Amit Luske  
Mors 1-5, Eibergen  
Netherlands 7151MX  
Mobile: (+31) 6-13-12-15-92  
(+31) 545-46-4640  
Fax: (+31) 545-47-50-65  
amit.luske@regalbeloit.com
- **MIDDLE EAST**  
Al Shibl Global (FZC)  
PO Box No 52298  
Hamriyah Free Zone  
Sharjah  
United Arab Emirates  
(+971) 05 5337 3239  
Fax: (971) 06 7314 965  
info@alshiblinH.com
- **UNITED KINGDOM**  
Amy Rachel Robinson  
Droitwich  
(+44) 1 299 250 859  
(+44) 1 299 251 493  
sales@motovario.co.uk
- **ALBERTA, Edmonton**  
Branch Mgr.,  
Mike Strenkowski  
780/437-3380  
Fax: 780/434-3448
- **BRITISH COLUMBIA, Vancouver**  
Branch Mgr.,  
Keary Bott  
888-599-1177  
Fax: 604-888-0337
- **MANITOBA, Winnipeg**  
Branch Mgr.,  
Charlie Vogel  
204/786-6802  
Fax: 204/786-6934
- **ONTARIO, Toronto**  
905/670-4770  
Fax: 905/670-8971
- **ONTARIO, Hanover**  
Branch Mgr.,  
Tracey McMeeken  
800/463-1797  
Fax: 800/225-9007
- **QUEBEC, Canada**  
Branch Mgr.,  
Michael Jenkins  
514/337-8020  
Fax: 514/337-0773

■ SALES OFFICE AND WAREHOUSE    ○ SALES OFFICE ONLY    □ WAREHOUSE ONLY



## LEEBIZ - THE LEESON™ APP

Yes, there's an industrial strength LEESON solution for your application. The LEESON app will assist you in finding the right product, right when you need it.

The all new LEESON mobile experience puts all of the information you need available everywhere you are with our easy-to-use mobile app.

### BENEFITS:

- Real-time access to account information
- Real time inventory visibility
- Shipment tracking
- PDF product packet information
- Alternative product suggestions

Check out our YouTube Channel!

 [YouTube/LeesonRegal](https://www.youtube.com/LeesonRegal)



Scan Code To  
Download App

**For product information, instructional tools, there's no better resource than LEESON.COM**



**Regal Beloit America, Inc.**

1051 Cheyenne Ave.

Grafton, WI 53024

Telephone: (262)377-8810

Fax: (262)377-3440

[www.RegalBeloit.com](http://www.RegalBeloit.com)

**APPLICATION CONSIDERATIONS**

The proper selection and application of power transmission products and components, including the related area of product safety, is the responsibility of the customer. Operating and performance requirements and potential associated issues will vary appreciably depending upon the use and application of such products and components. The scope of the technical and application information included in this publication is necessarily limited. Unusual operating environments and conditions, lubrication requirements, loading supports, and other factors can materially affect the application and operating results of the products and components and the customer should carefully review its requirements. Any technical advice or review furnished by Regal Beloit America, Inc. and/or its affiliates ("Regal") with respect to the use of products and components is given in good faith and without charge, and Regal assumes no obligation or liability for the advice given, or results obtained, all such advice and review being given and accepted at customer's risk.

For a copy of our Standard Terms and Conditions of Sale, please visit <http://www.regalbeloit.com> (please see link at bottom of page to "Standard Terms and Conditions of Sale"). These terms and conditions of sale, disclaimers and limitations of liability apply to any person who may buy, acquire or use a Regal product referred to herein, including any person who buys from a licensed distributor of these branded products.

Regal, LEESON, Extreme Duck, Washguard and IRIS are trademarks of Regal Beloit Corporation or one of its affiliated companies.

©2018 Regal Beloit Corporation, All Rights Reserved. MCB17062E • Form L0024E • Printed in USA

